



Customer: Magic Fairy Candles
Address: 634 Main St.
Longmont, CO 80501
Sample ID: Sooth Hemp Infused Roll-On
Matrix: Topical
Labnumber: 23K0060-02

Density (g/mL): .9119

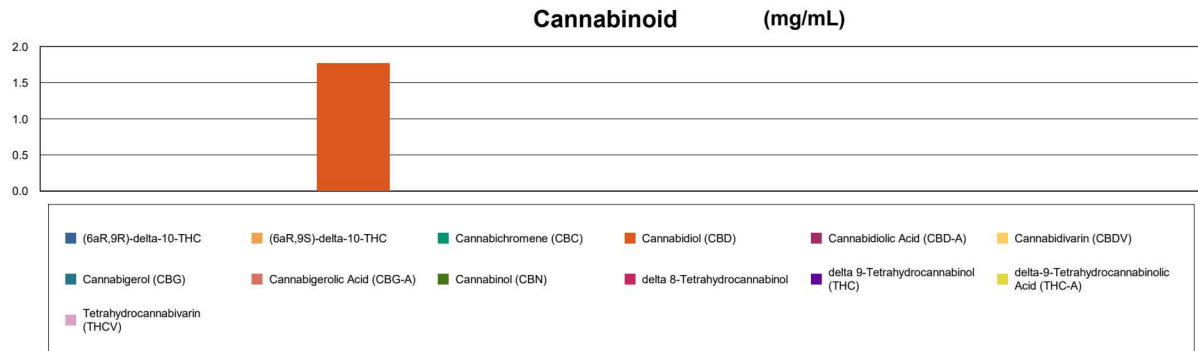
Cannabinoid Profile

Test Conditions: 19°C
Extraction Technician: SH
Analytical Chemist: SH

Extraction Date(s)	Analysis Date(s)
11/13/2023	11/13/2023

Test Method: Cannabinoid Potency by HPLC		Results	
	LOD (mg/mL)	%	mg/mL
Cannabidivarin (CBDV)	<0.080		
Cannabidiolic Acid (CBD-A)	<0.080		
Cannabigerolic Acid (CBG-A)	<0.080		
Cannabigerol (CBG)	<0.080		
Cannabidiol (CBD)		0.18	1.77
Tetrahydrocannabivarin (THCV)	<0.080		
Cannabinol (CBN)	<0.080		
Cannabichromene (CBC)	<0.080		
delta 9-Tetrahydrocannabinol (THC)	<0.20		
delta-9-Tetrahydrocannabinolic Acid (THC-A)	<0.20		
delta 8-Tetrahydrocannabinol	<0.20		
(6aR,9S)-delta-10-THC	<0.20		
(6aR,9R)-delta-10-THC	<0.20		
Cannabinoids Total		%	mg/mL
Max Active THC (delta-9-tetrahydrocannabinol)		<0.02	<0.20
Max Active CBD		0.18	1.77
Total Cannabinoids		0.18	1.77

Following USDA guidelines on uncertainty, Altitude Consulting's uncertainty is calculated to be +/- 5% for all cannabinoids using a coverage factor of 2 (95% confidence interval). Measurement uncertainty has not been factored into reported values. Blank results indicate the compound was below the limit of detection.



END OF REPORT

END OF REPORT

Gary Brook - Laboratory Director - 11/14/2023

Reporting Limits will vary based on sample extraction weight used for the analysis.

The results of this report are based solely on the sample submitted and cannot be reproduced. Decision Rule: Measurement uncertainty is not accounted for in the reported values. Results are based solely on calculated numbers. Altitude Consulting makes no Statements of conformity. Pesticide, metal, and microbial analyses are subcontracted to ISO 17025 laboratories.